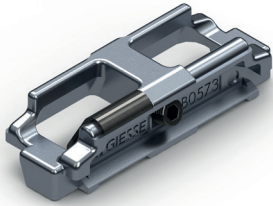


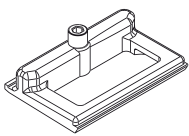
STRIKERS



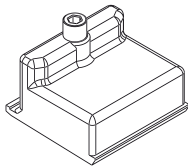
Functions

Components made to be fitted on frames of casements with one or more sashes with the function of accommodating the tips of bolts and terminals and the fastening pawls made by GIESSE.

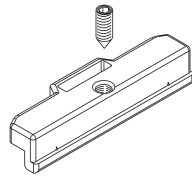
Type 1



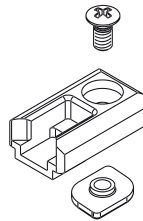
Type 2



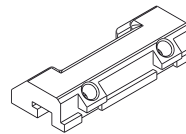
Type 3



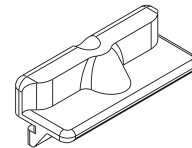
Type 4



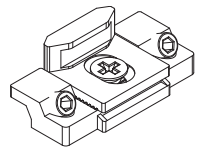
Type 5



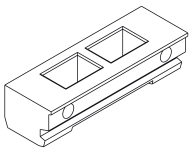
Type 6



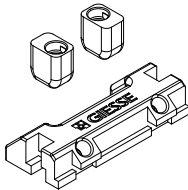
Type 7



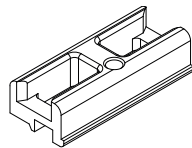
Type 8



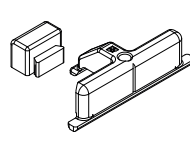
Type 9



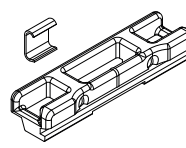
Type 10



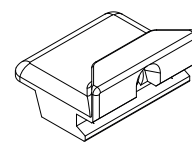
Type 11



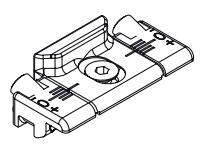
Type 12



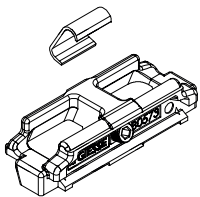
Type 13



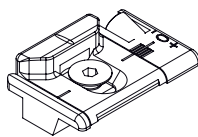
Type 14



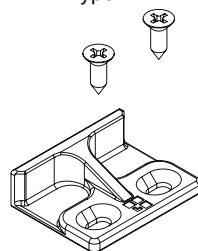
Type 15



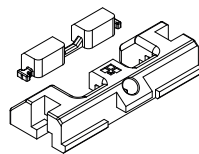
Type 16



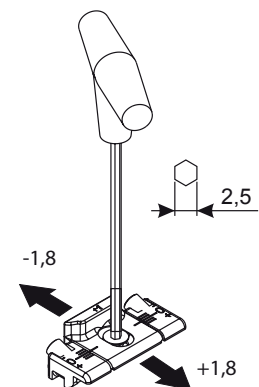
Type 17



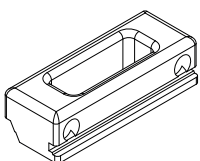
Type 18



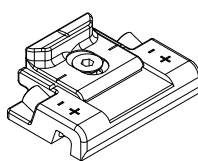
Compression adjustment



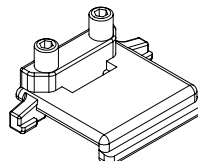
Type 19



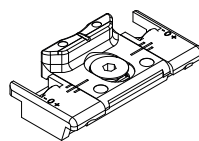
Type 20



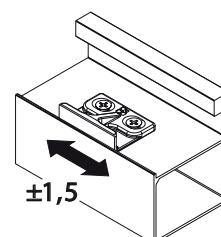
Type 21



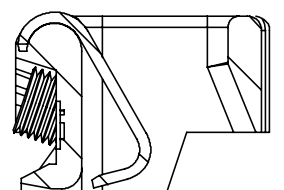
Type 22



Side adjustment



Adjustment art. 01348K



STRIKERS AND FASTENING MECHANISMS

Item code	Description	Type	Type	PROFILE CROSS - SECTION	Adjustable (mm)	Material	Colour	3° fastening mechanism	Base Raw	Anodised Elox	Painted	Trend/Gold Brass	Pieces per pack
01215	STRIKER	18	Double	C007	No	Zamak	Grey		X				100
0127901	STRIKER	21	Single	C010	No	Zamak	Grey	X	X				100
0130501	STRIKER	1	Double	see Where Used	No	Zamak	Grey		X				100
0130601	STRIKER	2	Single	see Where Used	No	Zamak	Grey	X	X				100
0130701	STRIKER	3	Double	C009	No	Zamak	Grey	X	X				100
01314K	STRIKER	4	Single	C001-C002-C004-C011-C012-C013-C014-C015-C016-C017	No	Zamak	Grey	X	X				100
0131501	STRIKER	4	Single	C010	No	Zamak	Grey	X	X				100
0131601	STRIKER	4	Single	see Where Used	No	Zamak	Grey	X	X				100
01317	STRIKER	5	Double	C007-C008	No	Polyamide	Black		X				100
01317K	STRIKER	5	Double	C007-C008	No	Polyamide	Grey		X				100
01318K	STRIKER	6	Single	C007-C008	No	Zamak	Grey	X	X				200
01322	STRIKER	4	Double	C001-C002-C004-C011-C012-C013-C014-C015-C016-C017	No	Polyamide	Black	X	X				100
01322K	STRIKER	4	Double	C001-C002-C004-C011-C012-C013-C014-C015-C016-C017	No	Polyamide	Grey	X	X				100
01328	STRIKER	8	Double	see Where Used	No	Polyamide	Black		X				100
01329	STRIKER	9	Double	C009	No	Polyamide	Black		X				50
01331	STRIKER	10	Double	C010	No	Polyamide	Black		X				100
0133801	STRIKER	11	Double	see Where Used	No	Zamak	Grey	X	X				50
01339	STRIKER	12	Double	C001-C002-C004-C006-C011-C012-C013-C014-C015-C016-C017	+ 0.8 (compression)	Polyamide	Black		X				100
01340K	STRIKER	10	Double	C005	No	Polyamide	Grey		X				100
01340N	STRIKER	10	Double	C005	No	Polyamide	Black		X				100
01342K	STRIKER	13	Single	C003-C005-C006	No	Zamak	Grey		X				200
01343K	STRIKER	13	Single	C001-C002-C004-C011-C012-C013-C014-C015-C016-C017	No	Zamak	Grey		X				200
01344K	STRIKER	13	Single	C007	No	Zamak	Grey		X				200
01345K	STRIKER	13	Single	C008	No	Zamak	Grey		X				200
01347K	STRIKER	14	Single	C001-C002-C003-C004-C005-C006-C011-C012-C013-C014-C015-C016-C017	+ 1.8 (compression)	Zamak	Grey		X				200
01348K	STRIKER	15	Single	C001-C002-C004-C006-C011-C012-C013-C014-C015-C016-C017	+ 0.8 (compression)	Zamak	Grey		X				100
01349K	STRIKER	12	Double	C001-C002-C004-C006-C011-C012-C013-C014-C015-C016-C017	+ 0.8 (compression)	Zamak	Grey		X				100
01353K	STRIKER	16	Single	C001-C002-C003-C004-C005-C006-C011-C012-C013-C014-C015-C016-C017	+ 2.4 (compression)	Zamak	Grey		X				200
01362K	STRIKER	14	Single	C001-C002-C003-C004-C005-C006-C011-C012-C013-C014-C015-C016-C017	+ 1.8 (compression)	Zamak	Grey		X				200
01393	STRIKER	17	Single	see Where Used	± 1.5 (side)	Zamak	Black		X				100
01396	STRIKER	14	Single	see Where Used	+ 1.8 (compression)	Zamak/Brass	Grey		X				200
01398	STRIKER	20	Single	see Where Used	+ 1.8 (compression)	Zamak	Grey		X				200
01400	STRIKER	22	Single	see Where Used	+ 1.8 (compression)	Zamak	Grey		X				200
01407	STRIKER	7	Single	see Where Used	+ 1.8 (compression)	Stainless steel	Stainless steel		X				50
02337	STRIKER	19	Double	C001-C002-C004-C011-C012-C013-C014-C015-C016-C017	No	Polyamide	Black		X				100